

NEW CORPORATE MANSLAUGHTER ACT COMES INTO FORCE

The new Corporate Manslaughter and Corporate Homicide Act 2007 comes into force on 6th April 2008. The Act means that for the first time, companies can be found guilty of corporate manslaughter as a result of serious management failures resulting in a gross breach of a duty of care.

The new Corporate Manslaughter and Corporate Homicide Act 2007 has been designed so that although individuals will not be liable under the Act, prosecutions for corporate manslaughter will look into management systems and practices across the organisation in question.

The penalties for any organisation found guilty under the new Act can include unlimited fines, remedial orders and publicity orders.

A court, through a remedial order, can make requirements

for an organisation to take steps to remedy any failures within the company that lead to the death.

Through a publicity order, a court can make requirements for an organisation to publicise that it has been convicted of corporate manslaughter, giving the details of the offence, the fine imposed on the organisation and the terms of the remedial order if one has been imposed.

The Corporate Manslaughter and Corporate Homicide Act 2007 will only cover deaths occurring from 6th April 2008, with deaths before that date being covered by existing law on corporate manslaughter.

More information on the new Corporate Manslaughter Act can be found at www.hse.gov.uk



WORLD DAY FOR SAFETY AND HEALTH AT WORK 2008

The 28th April sees the 5th annual World Day for Safety and Health at Work 2008.

Previous themes for the event have included creating and sustaining a safety culture in the workplace and eliminating the discrimination associated with HIV/Aids in the workplace.

The theme of this year's event is 'My Life, My Work, My Safety - Managing risk in the Workplace.'

To mark World Day for Safety and Health at Work 2008, the International Labour Organisation has produced a new guide to remind businesses of the key steps to successfully manage and reduce risk in the workplace.

The new guide encourages employers to consider who is at risk from certain hazards in the workplace and identifies the main areas employers and

employees need to consider when looking to reduce risk in the workplace.



The main actions businesses should take to reduce risk in the workplace include:

- Identifying the source of risks in the workplace and eliminating or reducing them from this point.

- Engineering controls or other physical safeguards to reduce the number of risks employees face.

- Providing safe working procedures to eliminate unnecessary risks.

- Providing and maintaining Personal Protective Equipment (PPE) to manage risks that cannot be eliminated.

The full guidance and employee awareness packs can be downloaded for free from www.ilo.org

COURSES AND EVENTS

- CIWM Waste Awareness - 7th May
- Corporate Manslaughter Act Briefing - 13th May
- CIEH Principles of Risk Assessment - 14th May
- CIEH Environmental Awareness - 15th May
- A Practical Guide to Carbon Footprinting - 20th May
- CIEH Health & Safety in the Workplace - 21st May
- Basic Fire Extinguisher Training - 22nd May
- Understanding OHSAS 18001 - 23rd May

Courses will usually be held at Groundwork Environment Centre, Blackburn with discounted rates for BEA Members. For more information or to suggest a new Training Course for 2008 please contact **Dayna Patterson** on **01254 669034**

MEMBER INFORMATION

Interesting Fact

A 1.8 litre car travelling 12,000 miles per year, on average, produces 3.51 tonnes of carbon dioxide

GREEN DESK HELPLINE

01254 669024
The **free** helpline- providing confidential **environmental** and **health and safety advice** exclusively for BEA members

IN THIS ISSUE

Ritherdon Reap the Benefits of Resource Efficiency Initiatives

Keep up to date with Health and Safety using **ELUSonline**
Environmental Implications of New Budget

Government Proposal to Cut VAT on Energy Efficient Products
Animal Care's Environmental and Health and Safety Successes

LancsBEA Resource Efficiency Team Welcomes Three New Advisors
New Corporate Manslaughter Act comes into Force

World Day for Safety and Health at Work 2008

OUR PATRONS

BAE SYSTEMS

BAXI POTTERTON

bosal

brabners chaffe street solicitors

TESTER MANUFACTURERS
J. H. BIRYWISTLE

ENVIRONMENTAL ADVISOR

RITHERDON REAP THE BENEFITS OF RESOURCE EFFICIENCY INITIATIVES

Darwen-based Ritherdon & Company Ltd specialise in the manufacture of enclosures and control panel metalwork, particularly for the electricity distribution network.

Since joining LancsBEA's Resource Efficiency Club in 2006, the Company has been working hard to become more energy efficient.

Ritherdon & Company Ltd has implemented the following initiatives to maximise savings:

Waste

- Cardboard packaging is now reused to reduce the amount of new packaging used.

- Staff members have been provided with mugs to eliminate vending cup use and waste.

Energy

- A new water chiller has been installed for a new spot-welder on site and for recirculating cooling water.

- A compressed air leak detection and repair programme has been implemented.

- A new variable speed drive compressor has been installed.

- A fast shutting door to the main loading bay to reduce heat loss has also been installed.



Water

- Cistern dams have been installed in WCs to reduce domestic water use.

Savings

Through implementing the initiatives, Ritherdon & Company Ltd have made the following annual savings:

- >40,7000 kWh of electricity
- >17 tonnes of CO2
- >24m3 of water
- 1 tonne of raw materials
- >£5,000 cost savings

If your business would like to make resource efficiency savings, joining a LancsBEA Resource Efficiency Club could help. Call LancsBEA on 01254 676747 or visit www.lancsBEA.co.uk

KEEP UP TO DATE WITH HEALTH AND SAFETY USING ELUSONLINE

Since its launch in August 2007, **ELUSonline** has gone from strength to strength. users up to date on the latest health and safety legislation saving them further time and resources.

Users of **ELUSonline** are kept up to date with the latest environmental legislation every month, making it the perfect tool for complying with an environmental management system such as ISO 14001. This means that users of **ELUSonline** will now have the option of creating a bespoke environmental register and a bespoke health and safety register.

As of the end of April, **ELUSonline** will incorporate a health and safety tool to keep For more information on **ELUSonline** or for a free trial visit www.elus.co.uk

VF
Verifyne Plastics

WE
WARDLE STOREYS

senator

Rolls-Royce

JJO
plc

DID YOU KNOW?

BUSINESS WATER SAVINGS

- UK businesses are needlessly wasting 310 million litres of water a day.
- Up to 30% of an organisation's water and effluent bill can be cut through implementing simple water saving techniques.
- On average, water consumption within a building drops between 18-25% when a water meter is fitted.
- A water saving device in the toilet can save up to 3 litres per flush.
- Washing a mug under a running tap uses approximately 1 litre of water. Six mugs can be washed in a bowl using the equivalent amount of water.
- One dripping tap can waste up to the equivalent of one bathful of water every week.

For more information on how to manage how much water your business uses visit www.envirowise.gov.uk



ENVIRONMENTAL IMPLICATIONS OF NEW BUDGET

The 2008 Budget was announced by Chancellor Alastair Darling on 12th March, with several green initiatives incorporated to increase levels of environmental protection and help the UK reduce its carbon emissions. The key environmental measures of the new Budget target the following areas:

Transport

An increase in Vehicle Excise Duty (VED) of 100% on the most polluting new vehicles will be introduced from 2010. From 2010, owners of new cars emitting over 255g of carbon dioxide per kilometre will be taxed at the higher rate for the first year.

To encourage motorists to make more environmentally responsible vehicle choices, from 2009 owners of new cars that emit less than 130g of carbon dioxide per kilometre will not be charged VED for their first year on the road.

As of 2009, six more emission category bands are to be introduced with lower taxes being charged for vehicles that emit less than 150g of carbon dioxide per kilometre and higher taxes being charged for vehicles that emit over 150g of carbon dioxide.

Carrier bags

If sufficient action is not taken by retailers on a voluntary basis by the end of the year to reduce the amount of single use carrier bags that they distribute, government will enforce a charge on

these bags next year. A consultation will be held to decide how the charge will work and to ensure that the money raised as a result of the charge goes to environmental charities.

Zero-carbon buildings

All new non-domestic buildings are to be zero-carbon by 2019. Government will consult this year on the timeline for this ambition and review progress in 2013. The policy is predicted to save at least 75 million tonnes of carbon dioxide in the next 30 years.

Renewables

In summer 2008 government will launch a full consultation on what needs to be done in the UK to increase renewable energy use and how barriers to the development of renewable technology, such as planning and grid access can be overcome.

Carbon emissions

The UK is currently working towards reducing its carbon emissions by 60% by 2050. In order to meet international targets, the UK may be forced to increase its targeted emission reductions to 80% by 2050. The government has asked the Climate Change Committee for advice on how the higher targets might be achieved.

More information on the new budget can be found at www.defra.gov.uk

GOVERNMENT PROPOSAL TO CUT VAT ON ENERGY EFFICIENT PRODUCTS

A joint proposal between the UK and France to cut the Value Added Tax (VAT) on energy efficient products, such as low energy light bulbs, fridges and insulation is to be considered by the European Commission (EC)

The Prime Minister believes that reducing the VAT on energy-efficient goods will encourage innovation in the market and encourage consumers to purchase more energy efficient products.



The proposal was welcomed by EU Leaders but said for it to be adopted it would require the approval of all 27 EU member states.

A letter was sent by UK Prime Minister Gordon Brown and French President Nicolas Sarkozy to the President of the EC asking the EC to include provisions for reduced VAT rates in the summer, following a meeting of the European Commission in June.

Further information on the proposal can be found by visiting www.parliament.gov.uk

ANIMAL CARE'S ENVIRONMENTAL AND HEALTH AND SAFETY SUCCESSES

Since joining LancsBEA, Animal Care have been working hard to make health and safety more manageable at their Lancaster sanctuary and minimise their environmental impact.

The charity, who specialise in the rehoming of dogs, cats and small animals are in the process of developing a new dog walk and goat paddock, designed to be as environmentally friendly as possible.

The new development incorporates recycled aggregate, uses a natural drainage system that benefits local wildlife and includes native Pennine shrubs to promote local biodiversity.

Animal Care have also been working hard to make health and safety more manageable at their Lancaster sanctuary.

The charity had found it difficult to coordinate health and safety due to the combination of members of the public, volunteers, staff and animals that could all be on site at the same time.



Working with LancsBEA, Animal Care have implemented a number of health and safety initiatives tailored to the charity's needs including:

- A review of the sanctuary's formal risk assessments, making them more user-friendly.

- The creation and circulation amongst staff of a new health and safety policy manual identifying potential hazards on site and how they are to be managed.

- The development of a health and safety working group that regularly meets to discuss arising issues.

- The creation of a health and safety induction presentation for new starters to ensure that they are aware of company health and safety procedures before they start work.

- The development of an online sign-in system for employees to check they have received appropriate training before they start work.

If your business would like to make health and safety more manageable LancsBEA offer consultancy services including health and safety audits and staff mentoring for £400 + VAT per day, with discounts available for members, as part of the LancsBEA Competent Person Package.



ERIC FAQs

I want to start using recycled paper in the office. How do I determine the recycled content of paper?

There are various environmental accreditation schemes associated with paper in the UK but they do not all guarantee that a proportion of the fibre used to manufacture the paper has been sourced from waste paper.

The most common recycled paper accreditation schemes are:

- German Blue Label – requires paper to be produced from 100% waste paper fibre.
- NAPM recycling mark – requires paper to have been produced using either 50%, 75% or 100% waste paper fibre.
- Green Seal criteria – requires paper to have been produced using 10% waste paper fibre.

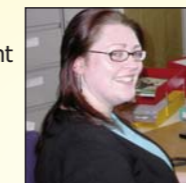
Some paper manufacturers use the traditional three arrow Mobius recycling loop with the recycled content of the paper in the centre of the loop as a percentage.

Paper accredited by the Forest Stewardship Council (FSC) does not necessarily mean that the paper has been produced from recycled paper sources. The FSC logo simply guarantees that the fibre used to manufacture the paper has been derived from an FSC-certified forest.

For more information visit www.wrap.org.uk

LANCSBEA RESOURCE EFFICIENCY TEAM WELCOMES THREE NEW ADVISORS

Jo Glynn joins LancsBEA having spent 7 years working at the Environment Agency's Ely Office, North of Cambridge, specialising in Packaging Regulations. Originally from Tameside and having studied Environmental Science at the University of Bradford, back in the North West Jo is looking forward to helping our member companies on a variety of environmental issues.



Christina Worsley spent the past 3½ years working for Lancashire Rural Futures as a Business Advisor after



studying Agriculture at the University of Central Lancashire (UCLan). Christina brings her background in renewable technology to the Resource Efficiency team and experience of working closely with businesses across the North West.

Alasdair Dalzel-Job has a biology degree, an MSc in Environmental Management from Newcastle University and is a Chartered Waste Manager. Alasdair joins us from UCLan where he was a business advisor at the Centre for Waste Management.

